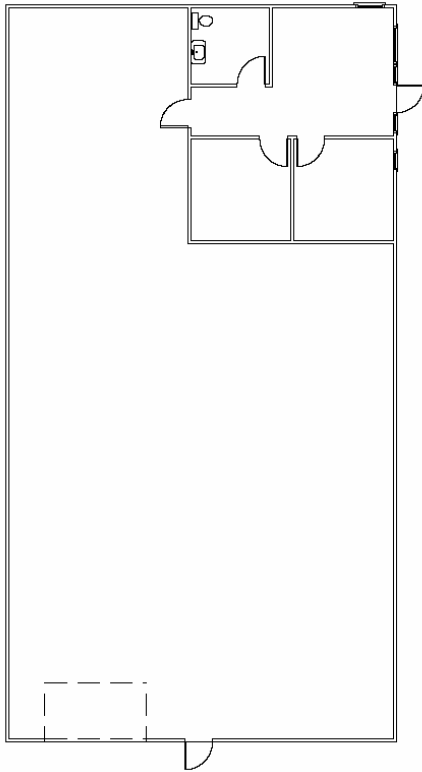


OFFICE / WAREHOUSE SPACE FOR LEASE

Southeast Centennial · New Building

**Centennial East
Corporate Center**
14185 E Easter Ave
Centennial, CO 80112



Unit B
3,365 SF

(Proposed)

- **LOADING** 1 drive in
 1 dock high
- **PARKING:** 37 free surface spaces
 (2.3/1,000SF)
- **POWER:** 240v, 3p
- **CLEARANCE:** 10' x 10' drive-in
 20' ceiling height

Bill Hirschfeld
720-895-0306
Bill@MeridianRE.com

Reese Davis
720-895-0308
Lorissa@MeridianRE.com



Meridian

Meridian Commercial Real Estate Associates · 9781 S. Meridian Blvd., Suite 217 · Englewood, Colorado 80112
Main: 720-895-8400 · Fax: 720-895-8388