

# OFFICE / WAREHOUSE SPACE FOR LEASE

Southeast Centennial · 1,312 - 2,950 SF Available

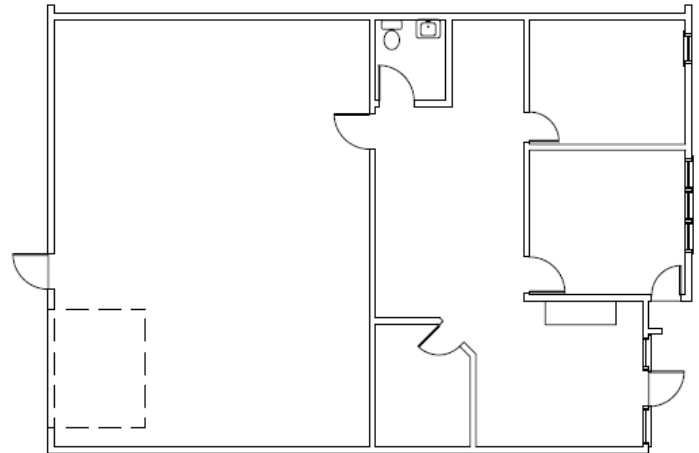
## Jordan Road Business Center

6920 S. Jordan Road  
Centennial, CO 80112

- Back lit signage for restaurant
- Near E. Arapahoe & S. Jordan Rd. intersection
- Quick & Easy Access to I25 & C-470



Suite	RSF	Comments
A	1,312 SF	**CATERING** Walk in cooler, hood
F	1,900 SF	5 offices, 50% warehouse
I	2,943 SF	25% whse, 2 drive ins, 5 ofcs, kitchen,
K	2,008 SF	3 ofcs, open, 50% whse
M	1,393 SF	1 office, kitchen, 60% whse



- **LOADING** 16 drive-ins
- **PARKING:** 85 Free surface spaces (2.5/1,000SF)
- **POWER:** 240v, 3p
- **CLEARANCE:** 10' x 10' drive-in  
12' ceiling height

**UNIT K**  
**\*\* SPEC SUITE!! \*\***

**Bill Hirschfeld**  
720-895-0306  
Bill@MeridianRE.com

**Reese Davis**  
720-895-0308  
Lorissa@MeridianRE.com



**Meridian** Commercial Real Estate Associates

383 Inverness Pkwy, Ste. 470  
Englewood, Colorado 80112

Phone: 720-895-8400  
Fax: 720-895-8388