

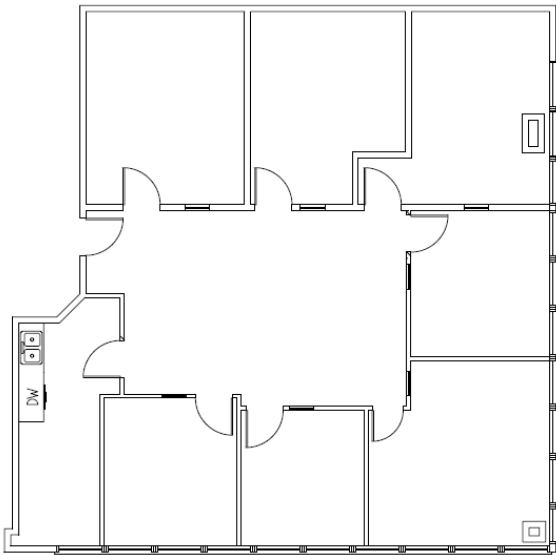
OFFICE SPACE FOR LEASE

**** MOVE IN READY ** · 685 - 2,838 SF Available**

Academy Place

**7333 W. Jefferson Ave.
Lakewood, CO 80235**

- Excellent access from Hampden & Wadsworth
- Close to hotels, restaurants, and major retail centers



Suite 270

- **PARKING:** 329 Free surface spaces (4.00/1,000SF)
- **CLASS:** B
- **YEAR BUILT:** 1984
- **BLDG SIZE:** 82,407 SF

Suite	RSF	Comments
165	1,901 SF	3 offices, open area <i>SPEC SUITE</i>
180	2,838 SF	10 offices, kitchen <i>DIVISIBLE - 685 SF</i>
270	1,975 SF	6-7 ofcs, reception, kitchen <i>SPEC SUITE</i>

Bill Hirschfeld

720-895-0306

Bill@MeridianRE.com

Reese Davis

720-895-0308

Lorissa@MeridianRE.com



Meridian Commercial Real Estate Associates

383 Inverness Pkwy, Ste. 470
Englewood, Colorado 80112

Phone: 720-895-8400
Fax: 720-895-8388